

re-envisioning the single family house

the american dream is not one size fits all. our dreams are changing, and the residential design community needs to develop new ideas for people who do not dream of the generic suburban mcmansion. the single family home is the most commonly built building in america, but less than 5 percent of the homes built in america have direct involvement with an architect. the SHEDit HOUSE re-envision the typical suburban home in an ecologically conscious manner that also reflects today's modern lifestyle.

“cost efficiency is primarily achieved by the minimization of the plan and simple building volumes... only spaces necessary are provided in the design, they are sustainable and reduce overall energy consumption and pollution” **...measurable**



scalable

- 1 entry 2 kitchen 3 gallery 4 office
- 5 flex space 6 away room
- 7 family room 8 bath
- 9 utility + recycling center
- 10 deck/porch 11 storage
- 12 bedroom 13 laundry
- 14 built-in 15 open to below
- 16 carport 17 kalwall
- 18 'media-bar'

- 1 pervious pavers
- 2 water filtration planter
- 3 photovoltaic wall 4 bamboo garden
- 5 operable windows at stair volume- 'chimney stack' ventilates house

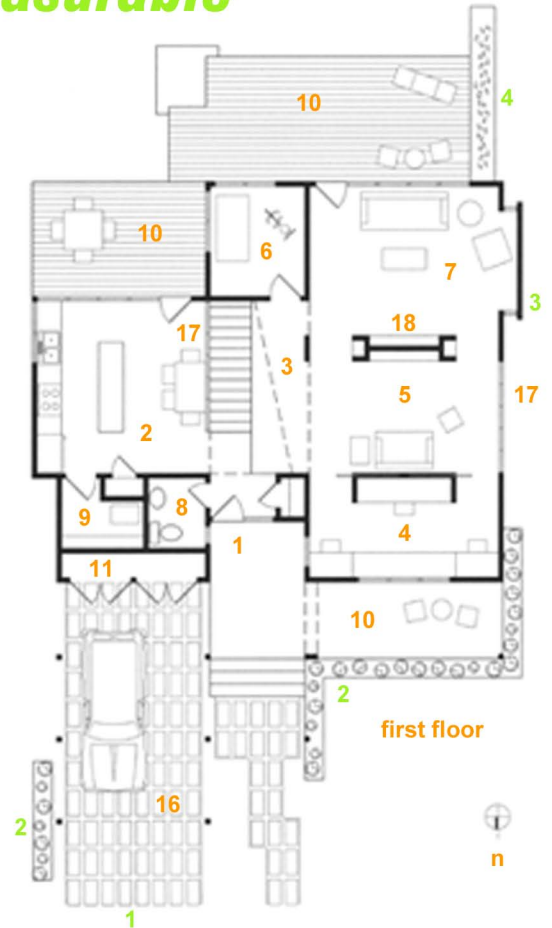


second floor

achievable

ecological

useful... “the single family home is the most commonly built building in america, but less than 5% of the homes built have direct involvement with an architect... re-envision the typical suburban home in an ecologically conscious manner... reflect today’s modern lifestyle”



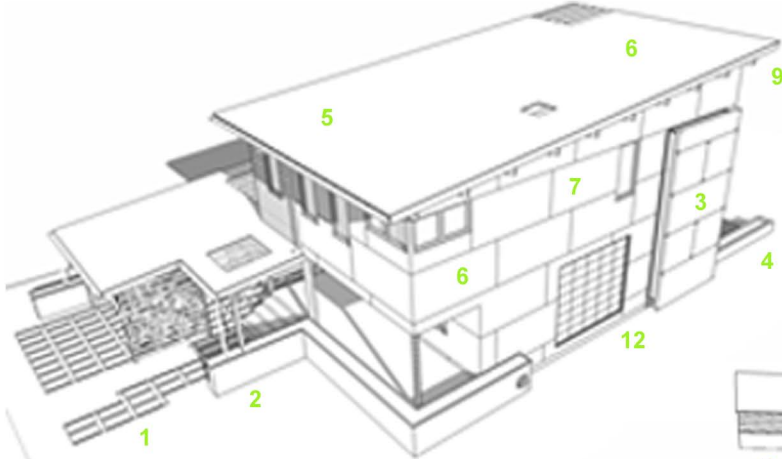
first floor

original



ecological...

“opportunities for enhancing the homes sustainability and reducing long term costs in the building commence during the design process... broad roof overhangs reduce heat gain with-in the home and reduce internal energy loads... reduce overall energy consumption and pollution”

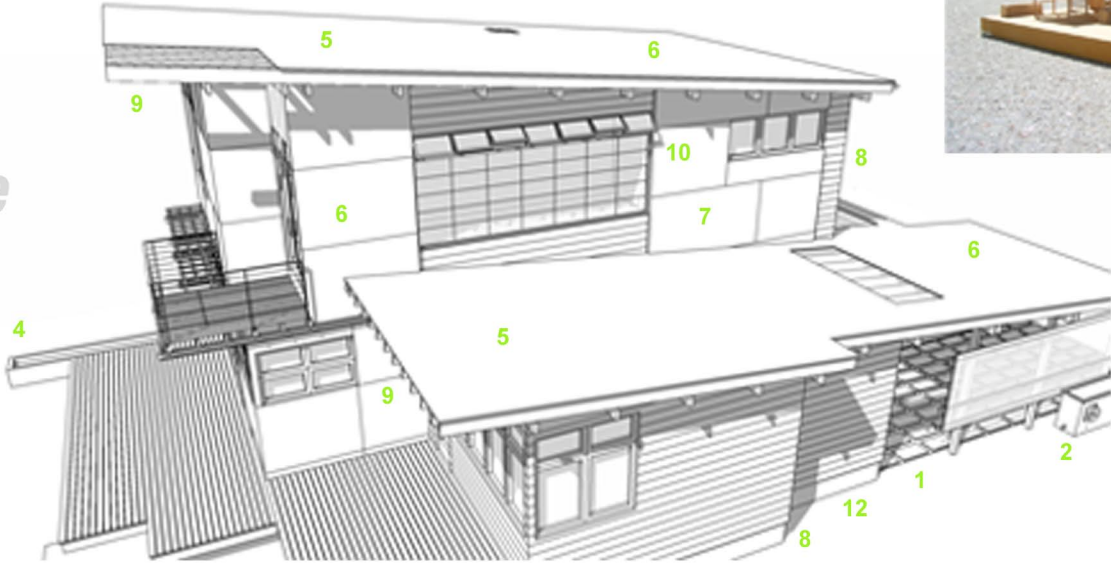


useful

- 1 pervious pavers
- 2 water filtration planter
- 3 photovoltaic wall
- 4 bamboo garden
- 5 metal 'cool' roof with integral photovoltaics
- 6 sip wall/ roof panels
- 7 cement panel rain screen exterior
- 8 trex board rain screen exterior
- 9 broad roof overhangs reduce internal energy loads
- 10 operable windows at stair volume- 'chimney stack' ventilates house
- 11 xeriscaping
- 12 sealed crawl space



measurable



rain water is collected + contained + filtered + re-used for vehicle washing and landscaping



scalable

original

“simplified framing plans allow for time efficient construction... use of pre-fabricated SIPs for both wall and roof panels... exterior elevations are composed of stock sustainable materials” **...achievable**